

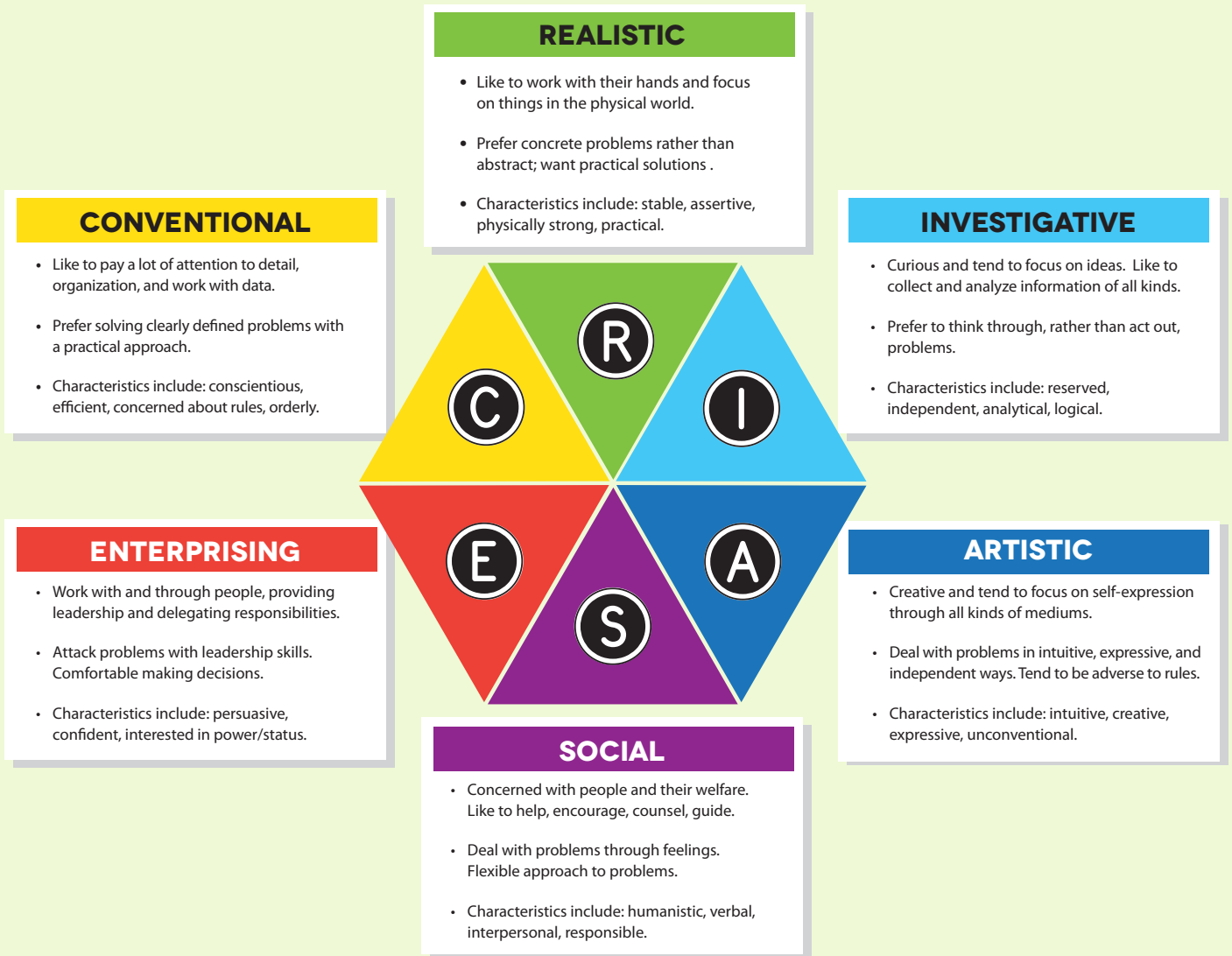


START: INTERESTS



“PERSONALITY” COUNTS

Here are brief descriptions of Holland’s six personality types and their interests and characteristics. After reviewing the descriptions, see if you can match some careers to personality types. Then in the **EXPLORE** section of the Café, you will take an Interest Assessment that will give you your Holland type and careers that match your interests.



MATCH CAREERS TO THEIR “PERSONALITY”

<p>Social Worker Respiratory Therapist Teacher</p> <p>Personality type: 1. _____</p>	<p>Dance Instructor Photographer Game Designer</p> <p>Personality type: 2. _____</p>	<p>Auto Mechanic Pilot Forest Ranger</p> <p>Personality type: 3. _____</p>	<p>Banker Office Manager Accountant</p> <p>Personality type: 4. _____</p>	<p>Doctor Detective Researcher</p> <p>Personality type: 5. _____</p>	<p>Politician Sales Representative Advertising Executive</p> <p>Personality type: 6. _____</p>
---	---	---	--	---	---

Answers: 1. Social 2. Artistic 3. Realistic 4. Conventional 5. Investigative 6. Enterprising